

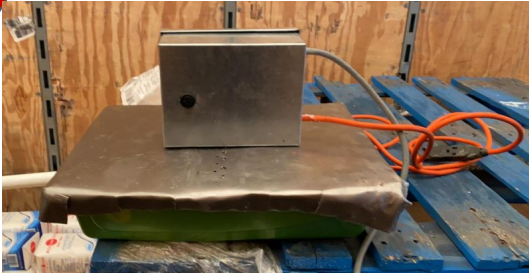
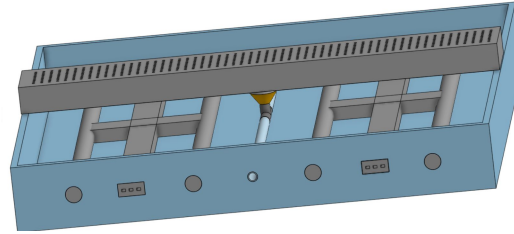
Amenah Waheed
Lucy McKenzie
Thomas Baycroft
Krishna Patel
Johnathan Rivington



Team Melt-0

- 1.5 Million CAD for snow removal each year
- Concerns over the impact salt has on the surrounding nature
- Looking for a new alternative





Assembly:

- anti-slip tract system
- grated central panel
- multi-component, modular system

Drainage:

- regular vs T-sectioned panels
- precipitation☐ input (grates)
- precipitation☐ output (pipes to sewer)

Electrical and Heating:

- via prong-connectors
- current runs parallel with device
- control by a single unit
 - ON/OFF/AUTO
 - Sensor controlled

Demonstration of the functionality of our device
(Freezer was -20°C)



0 Mins



3 Mins



6 Mins



9 Mins



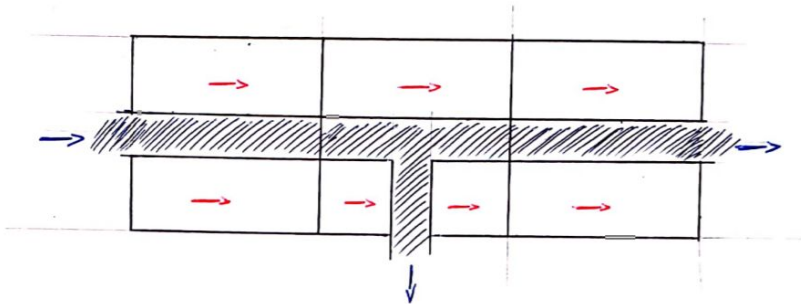
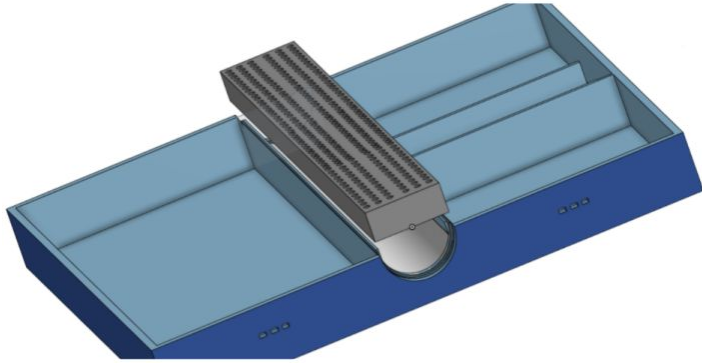
12 Mins



15 Mins

Our Uniqueness

Exportation of precipitate is done in a safe and preventive manner





- Individual panels
 - Modular
 - Easy maintenance + storage
- Heated Electrically
- Tri-setting control
 - ON/OFF
 - AUTO (sensor controlled)
 - OVERRIDE (safety)

Live Prototype Demonstration





Thank you

2 sentence summary:

In hopes to replace the economic and environmental stresses caused by salt for snow and ice removal, an effective, seasonal, snow-melting sidewalk was designed. It is to be installed in high traffic areas and emergency exits at the University of Ottawa; this solution does not compromise safety or functionality. This device will protect the environment while still allowing the solution to be modular and scalable as seen fit by clients.