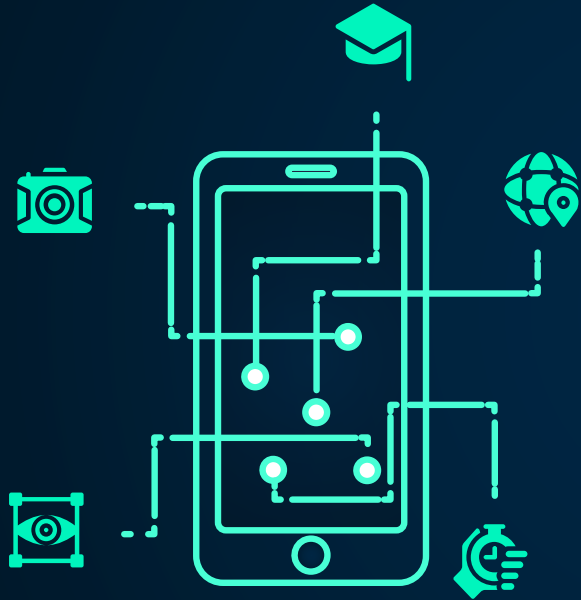




Eye Gaze Camera Cover Proposal



SOLUTION 1

- Create an app which turns the Eye Gaze Camera Tracker on and off remotely
- Require zero assistance from other people
- Simple UI for ease of access and usability

Major Features



SECURE

Using secure Bluetooth handshake method



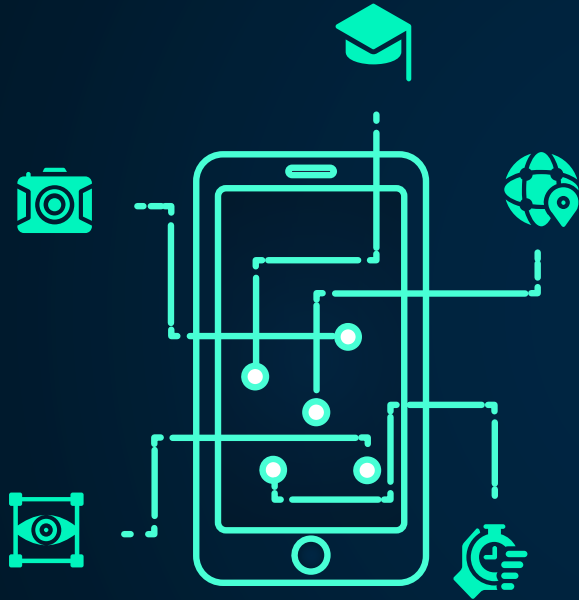
ACCESSIBLE

Simple UI for ease of usability



FAST AND RELIABLE

Calling optimized shell scripts for fast execution and performance



SOLUTION 2

- Using Smyle mouse as a new software solution on the iPad
- Require zero assistance from other people
- Based on the person smiling to dwell click

Major Features



ACCESSIBLE

Already developed app with support



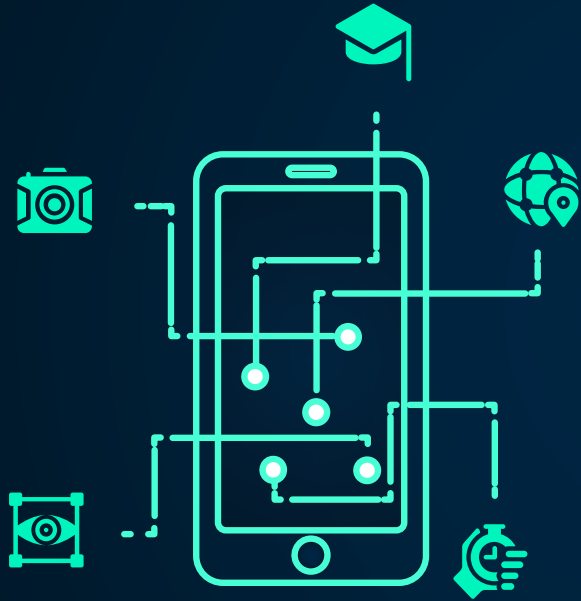
FAST AND RELIABLE

Based on customer feedback it is a reliable software



Dwell click

A dwell click using the person's smile rather than the reflective dot



SOLUTION 3

- Using microcontrollers temporarily distort the infrared sensors that read eye movement
- Require zero assistance from other people
- Cross compatible and will work across all versions and products that use near infrared light

Major Features



Detection Sensors

Sensors used to detect near infrared light and notify system of non are detected



Safe Distortion

Generate safe rays that will distort the eye gaze camera based on command



Support Application

Using an app built on IOS to enable and disable distortion

SNEAK PEEK OF SUPPORT APP

