



VR Simulation Generator and Interface

Group 6

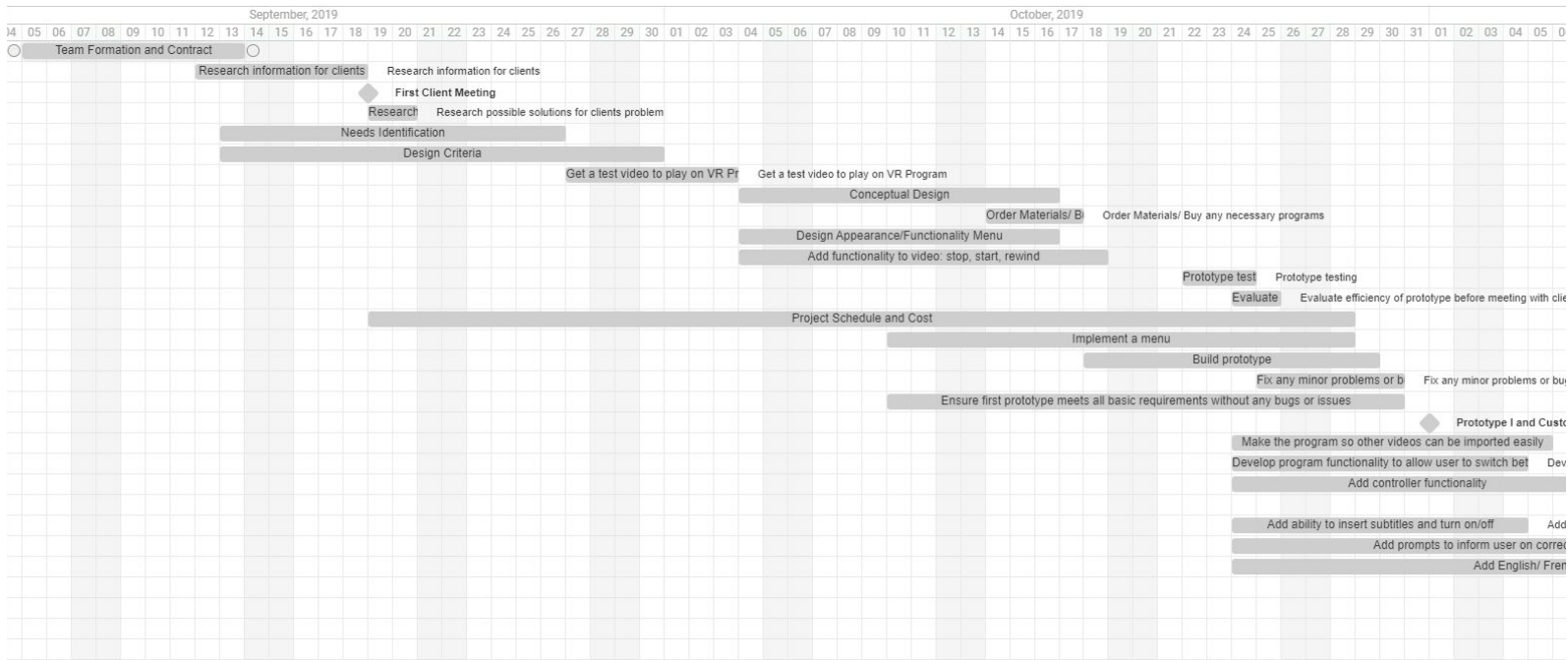


Introduction/Design Philosophy

- Develop a user-friendly application that can allow for a fluid and efficient experience for both the patient and practitioner
- This will be done through a robust menu design that will incorporate program configurability options like the ability to add new videos, add new options to menu interface, and change controller mapping
- Full program configurability is meant to allow the program to be molded by the practitioner, putting the power in your hands



Timeline



Our Prototype

—



Next Steps

- Add the ability to select files to add instead of requiring a URL
- Expand on the current functionality of program
- Make the video play more smoothly