

Deliverable H

- 1. You must gather feedback and comments on your ideas and prototype from potential clients/users that you have sought out and identified on your own and/or your actual client. It is now after the third client meeting so be resourceful to find other users who can give you feedback, however it can be as easy as asking your friends and family a few questions.**

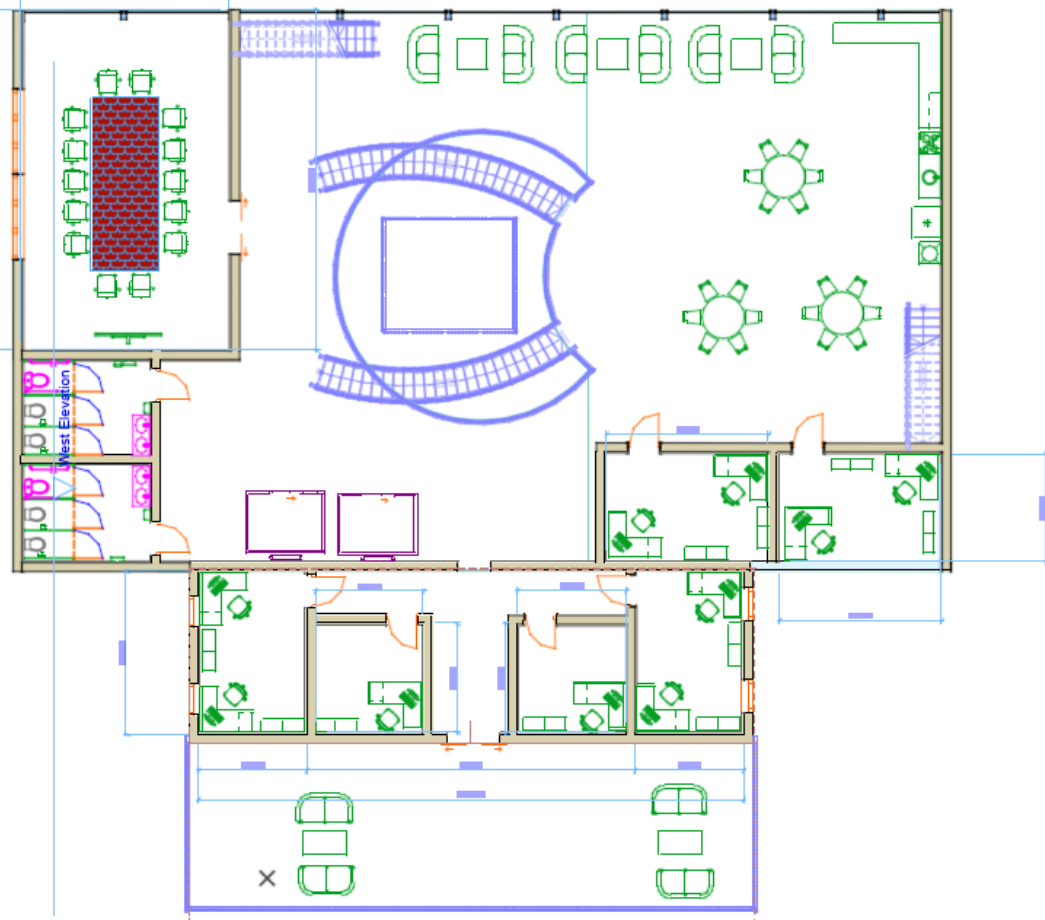
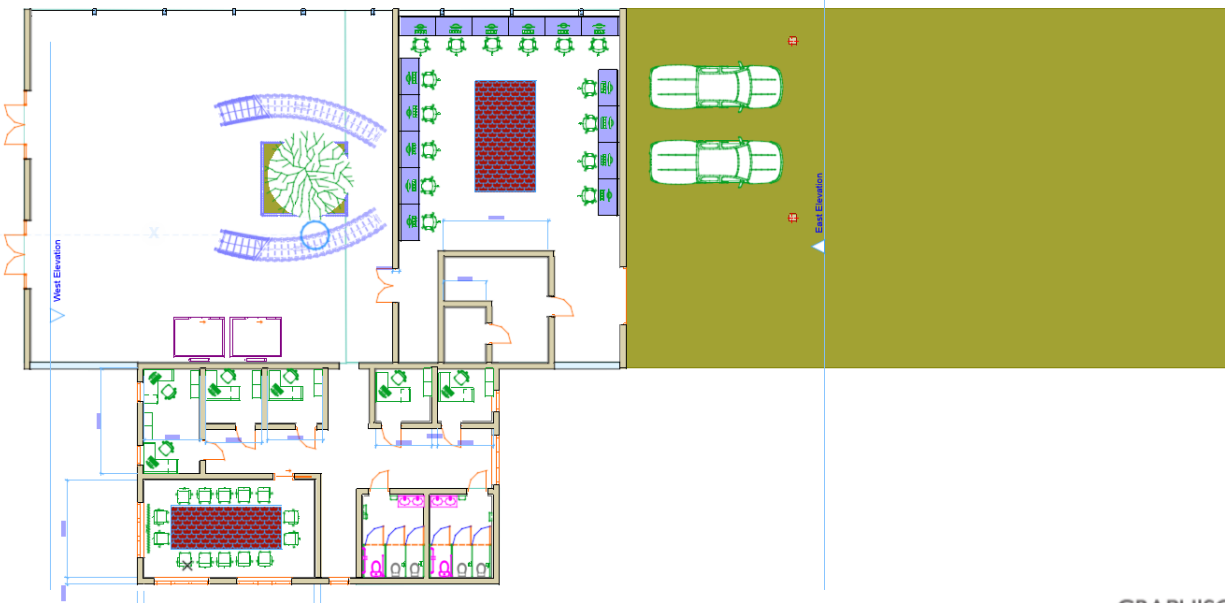
Feedback:

- The client suggested strategic placement of windows instead of simply having the entire roof as a window in order to maximise thermal efficiency. They do approve of the 9 offices however more offices were suggested.
- Feedback from others such as friends merely recommended certain aesthetic choices of colour and material such as the shade of the wood floors or the walls which has been taken into careful consideration for the final design.

Justification and Reasoning:

This prototype features the final prototype, which builds upon the second one where there is a significant increase in details for the specific subsystems and the overall design. There has been a filling in some of the empty space with additional interior space to create a more realistic vision of the final design in order to receive the final feedback and make any adjustments, especially aesthetically. Based on the previous prototype which had successfully passed all prototype tests we have only continued to design and create the details of the design without any major changes to the original design that was planned. The only major adjustments stems from the client feedback in which the total number of windows was reduced in order to favour more strategic placement in order to maximise thermal efficiency and thus reduce the energy consumed in order to heat/cool the building. Also, there have been additional offices that were added by adjusting the space of the offices and certain rooms. There has been some slight adjustment to dimensions in order for the prototype to be properly made in the software however nothing significant has changed, and no change in cost occurred. The testing plan for the final prototype remains the same as the previous ones in order to then generate the final design.

Images of Final Prototype:



CRANFIELD

CRANFIELD





Wrike SS:

<https://www.wrike.com/frontend/ganttchart/index.html?snapshotId=t6G52aPpHjU2LI0ELvNfP1NjQpAVAqM6%7CIE2DSNZVHA2DELSTGIYA>