

## Deliverable I

### **Design day 3 min presentation:**

Every great engineering design starts with a problem. Our problem was that the guardian program did not have an adequate research facility. (If we are first, then here is the additional starter info: the guardian program is an Indigenous-based research facility focused on the remediation of the environment. In order to accomplish this they are in need of a home base in order to store, analyze and collect data along with presenting the community with a safe gathering space for all their needs.)

After several meetings with the client to discuss their values and needs:

- Valued sustainability
- Specific facilities they wanted to be included in their new building

We came up with this final design:

On the first floor, we have the main entrance with a large beautiful tree in the center. Having this centrepiece establishes that close relation with nature that our client, and we all value.

We have the lab area in the back. As you can see, there is a large table for the workspace with several computer stations placed around the lab for when the data collection is ready to be entered into their digital systems.

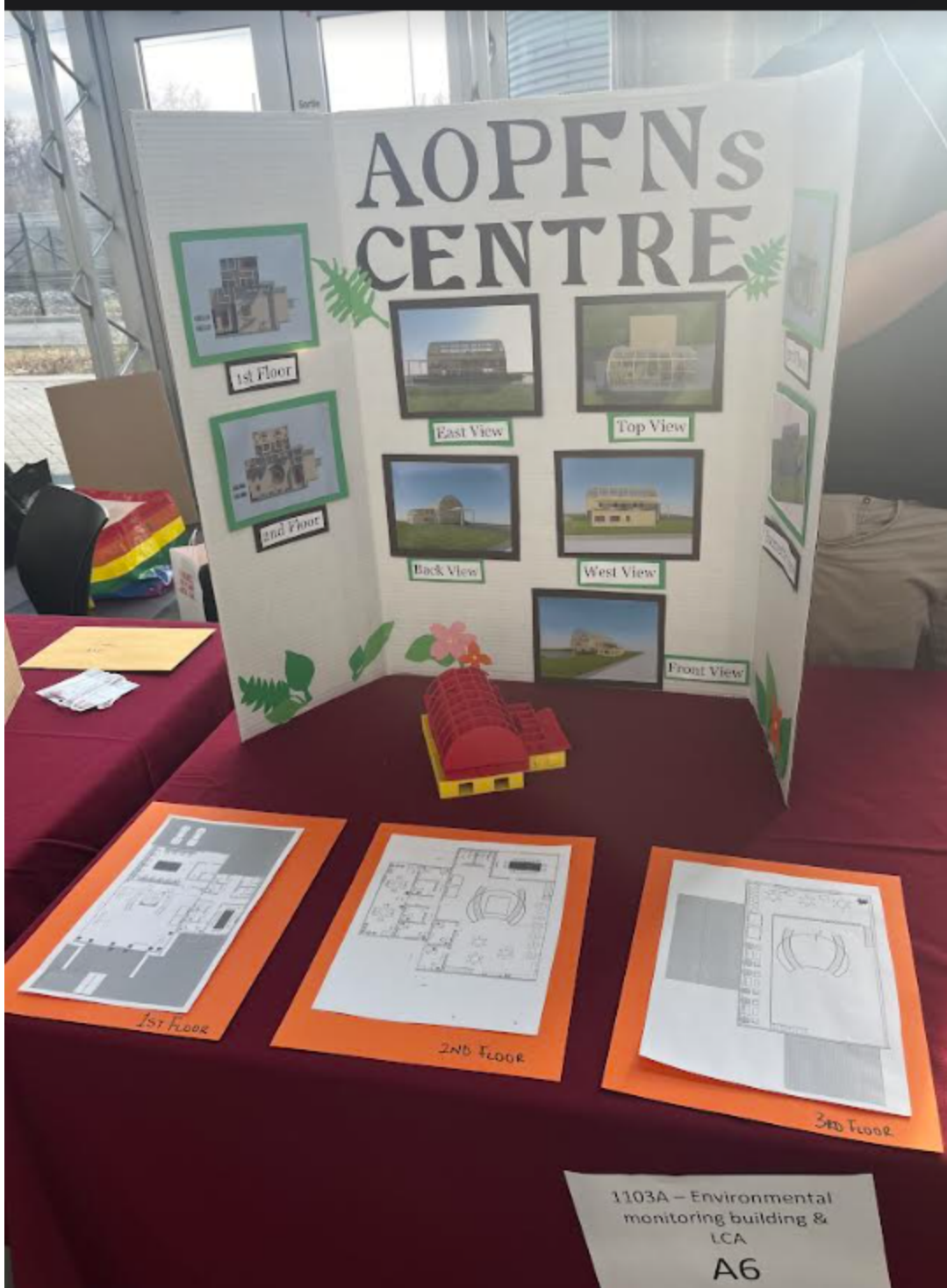
The garage door at the back is right near the storage room and walk-in freezer, so they do not need to travel too far when larger collections are brought in.

We also have some offices and a boardroom meeting on the side edition

Now onto the second floor, which is mainly for the staff. The second floor features a kitchenette, an outdoor break area, another boardroom, several single offices, and a few group offices.

The shape of our building came from the traditional indigenous wigwams in order to celebrate and symbolize our client's indigenous heritage.

We're hoping to create a safe space for the entire community to use and honour nature as well as their mission to protect it.



# AOPFNs CENTRE



1st Floor



2nd Floor



East View



Top View



Back View



West View



Front View



1st Floor

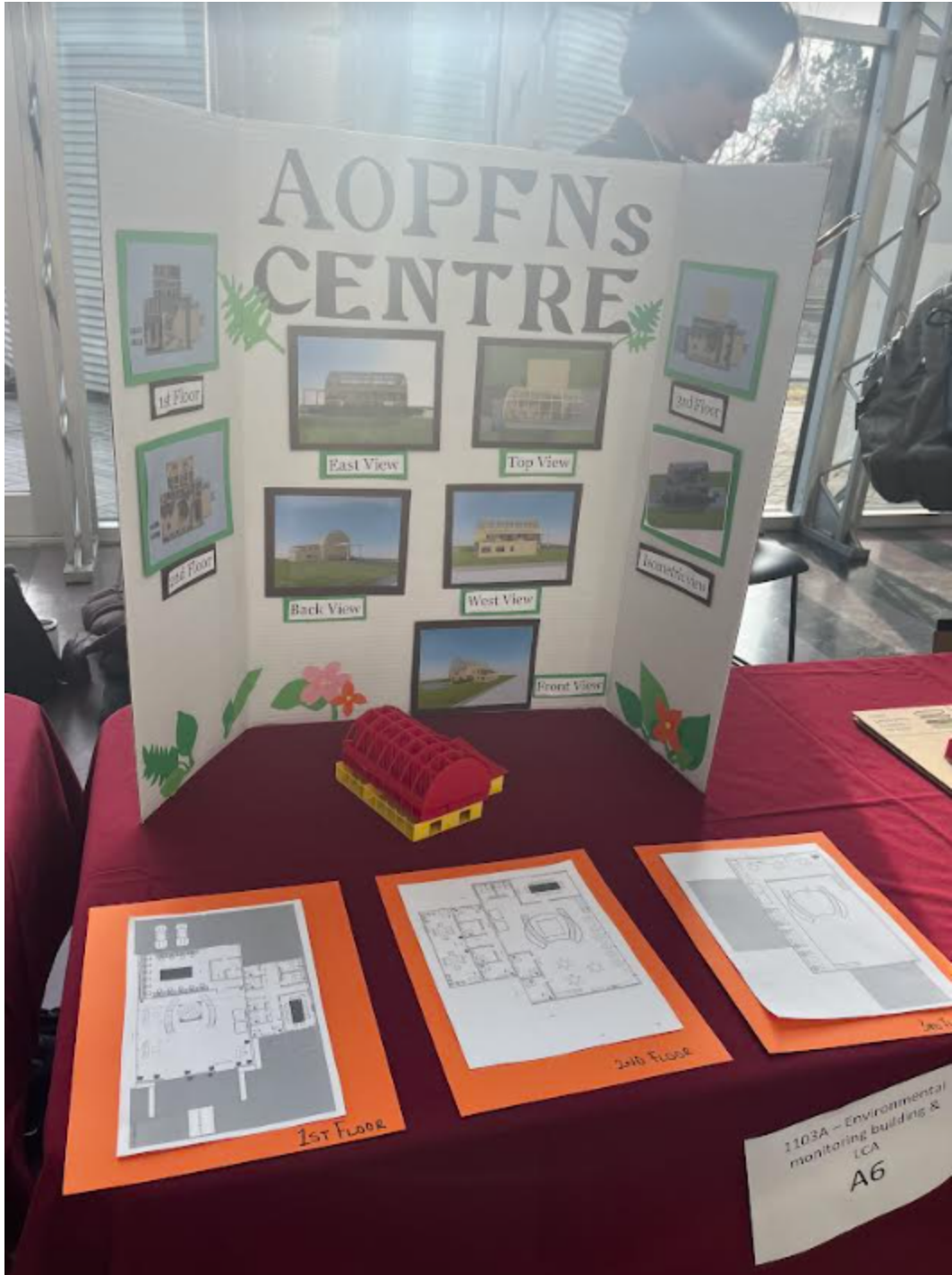


2nd Floor



3rd Floor

1103A - Environmental monitoring building & LCA  
A6



# AOPFNs CENTRE

1st Floor

1st Floor

2nd Floor

2nd Floor

East View

Top View

Back View

West View

Front View

1st Floor

2nd Floor

1103A - Environmental monitoring building & LCA  
A6

