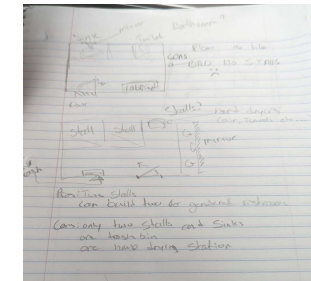
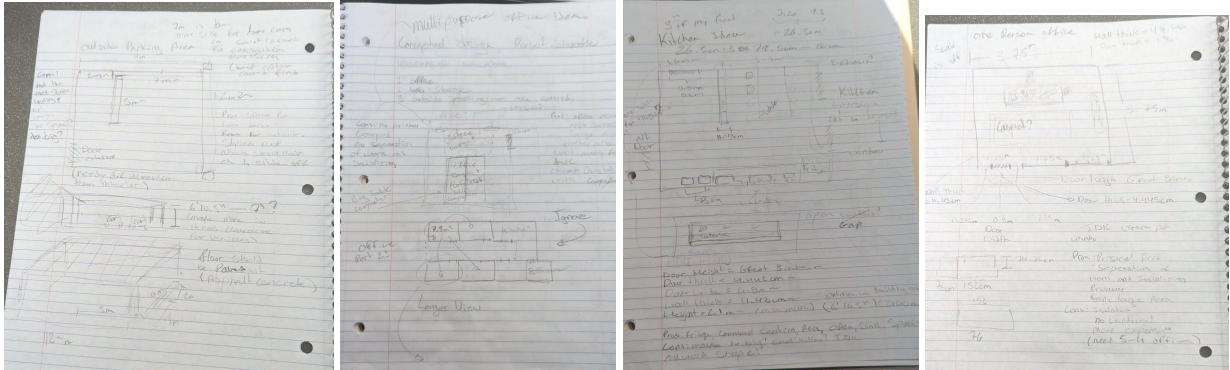


## Deliverable D: Conceptual Design

Based on the design criteria outlined in previous deliverables, a collection of conceptual designs for various rooms in the Guardians building have been created. With each design, there is a description of the room as well as the pros and cons of the specified room. From all of the conceptual designs, three have been chosen to be analyzed and evaluated in more detail and used in future deliverables.

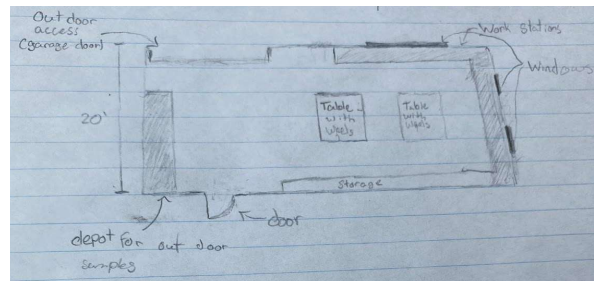
### 1) Alec's Designs



Photos in order(1,2,3,4,5)

<b>Designs</b>	<b>Pros</b>	<b>Cons</b>
1) Outside area	Space for two cars, Room for activities, sloped roof allows snow or rain to slide off.	Not enough room for activities, not enough room, lacking stability.
2) Office area	Open area, easy communication, lounge area for work away from desk, relatively cheap (one big table with computers)	No privacy, places could become cramped, no separation of social areas and work areas.
3) Kitchen	Fridge, communal seating area, open design, sink.	Perhaps too big, small kitchen, awkward shape.
4) Office (2nd idea)	Personal area, Separation of work and socializing, Privacy, fairly large office area (3.75mX3.75m).	Isolated, no windows depending on location, more expensive(need to make 6 offices).
5) Bathrooms (bottom design)	Small, easy to fit into floor plan, easily duplicated for making gendered bathrooms.	Only two stalls, one trash bin, and only two sinks.

## 2) Nico's Design - Indoor Workspace



### Description

This multipurpose workspace has a garage door to access the outdoor workspace as well as a large counter inside to drop off samples. The actual workspace has 2 tables that have wheels so they can be moved according to the clients liking. The contour of the rest of the room are workstations that will have computers and monitors. The back of the room is a long storage cabinet that can be used to store equipment.

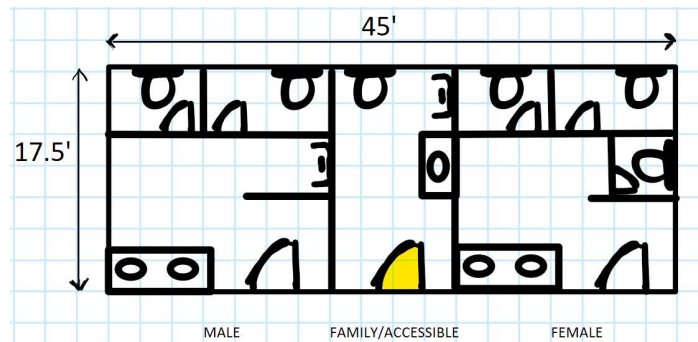
### Pros

- Big transition space (Garage door)
- Lots of storage space
- Space to depot outdoor samples

### Cons

- Could get crowded very fast
- Work could easily get disrupted by distractions (Loud Garage door, Outdoor stuff)

## 3) Ryan's Design - Washroom



### Description

3 Part Washroom divided by gender and accessibility. There are 2 manual doors and 1 automatic door (yellow) for the accessibility washroom. Each bathroom takes into account ADA standards accommodates for the users respectively.

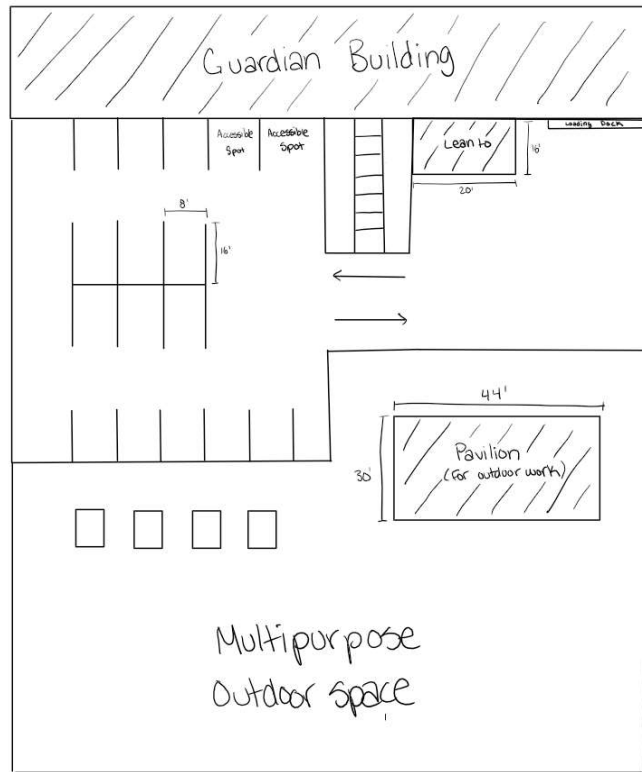
### Pros

- The space between the general washrooms are divided so that there is privacy even when the main doors are open. There is a washroom for everyone.
- Sinks are easily accessible and right beside door for those who do not need the to use the washrooms but, freshen up/wash hands

### Cons

- The family/accessible washroom does not accommodate multiple people using it simultaneously.

#### 4) Esmée's Design - Multipurpose Outdoor Workspace



#### **Description**

Parking lot for employees and visitors with a Lean To for company vehicle storage. There is a loading dock which leads into the Guardian Building's lab space. The multipurpose outdoor space has sufficient room for any and all work related tasks/communal activities.

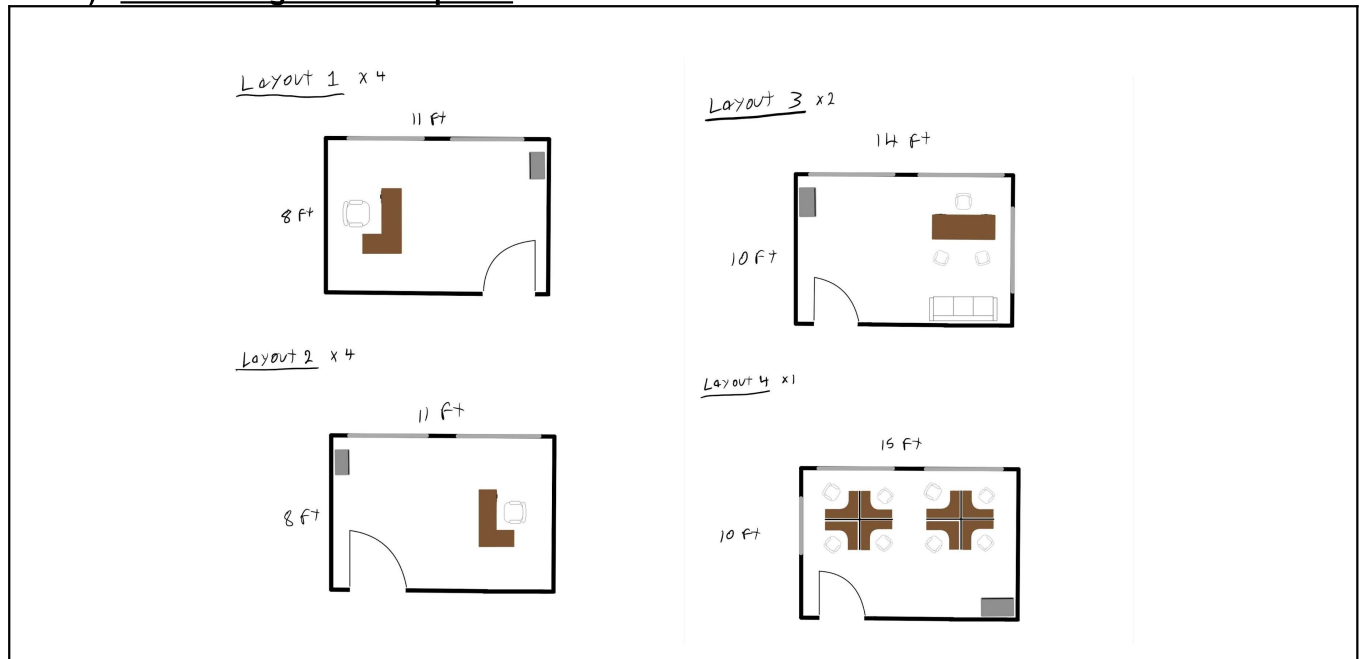
#### **Pros**

- Sufficient parking for employees and visitors
- Multiple direct access points to the building
- Lots of room for various activities
- Plenty of room for their trucks to maneuver

#### **Cons**

- Limited space for company vehicles (only limited to two spots, no room for expansion)
- Little room for parking lot expansion (space would have to be taken from the outdoor space)

## 5) Sam's Design - Office Spaces

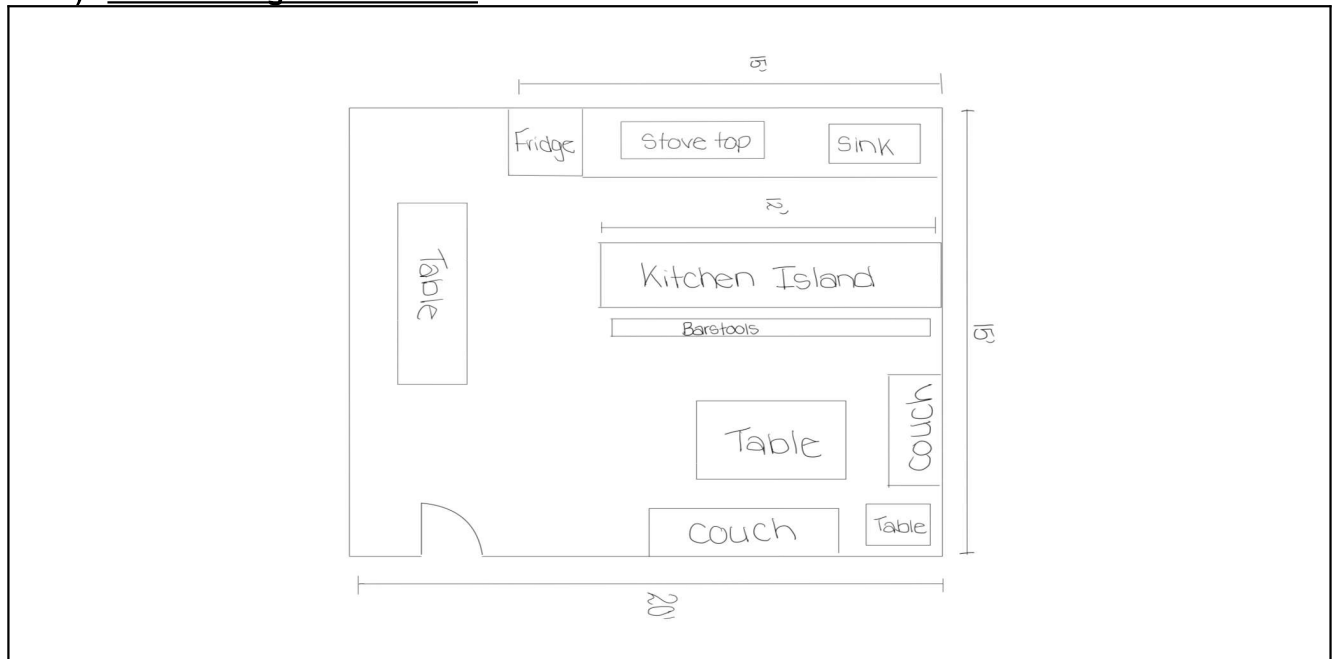


### Description

Multiple different office layouts, providing various options to accommodate employees needs (permanent vs temporary office spaces).

<u>Layout</u>	<u>Pros</u>	<u>Cons</u>
1,2	→ Lots of space for one person, good lighting (two windows), large desk space	→ Simple design, takes up a good amount of building space for one person
3	→ Huge amount of space for one person, great lighting (three windows), large desk space, seating area for others	→ Simple design, takes up quite a lot of building space for one person
4	→ Office space for eight people, great lighting (three windows), does not take up too much building space for how many people can work in the space	→ Not a lot of space for each person, simple design

## 6) Anna's Design - Kitchenette



### **Description**

A kitchenette equipped with the necessary appliances and table space for employees to eat meals in. There is a lounging area where the employees can take their breaks/socialize.

### **Pros**

- Sufficient space for all employees to eat
- Has all necessary amenities
- Space available for employee socialization

### **Cons**

- Insufficient space for large gatherings (over 20)
- Not a fully equipped kitchen (no stove, dishwasher etc.)

Subsystems	In-depth Description	Justification
Nico - Indoor Workspace	A multipurpose workspace with a garage door that allows access to the outdoor workspace. The garage door is connected to a loading dock for the transfer of large contents from the Guardians' trucks to the lab. The workspace has two mobile tables to attend to the immediate needs of the employees. Along the perimeter of the workspace are workstations that will have computers where the Guardians can log any information related to their remote work. Along the back wall of the workspace is a large shelving unit used to store handheld lab equipment when not in use.	The client emphasized the importance of having this indoor workspace. The work conducted in this space varies, meaning that the room must be accommodating to many tasks. A large contributor to this need is the mobility of the two tables. Direct outdoor access to the loading dock/parking area makes the transfer of contents from the trucks to the lab more efficient and reliable.
Sam - Offices	Multiple different office layouts, providing various options to accommodate employees needs. The options include two similar layouts for an office for a single individual, as well as a larger office layout with the capacity to entertain visitors and/or host small meetings. Another option for an office space that is shown above is a room with multiple cubicles that can hold multiple employees who require additional shared office space.	The client mentioned that there will be full time as well as part time employees on the site. For this reason, having various options for office layouts would be ideal given that different types of employees may require different accommodations. For example, full time employees will need a permanent office where they can conduct their daily tasks, host meetings, etc. Whereas, having temporary office spaces for part time employees to use as needed will not only reduce the overall cost of the building but it will reduce the amount of unused space on a day to day basis.
Esmée - Multipurpose Outdoor Workspace	The multipurpose outdoor workspace includes a parking lot for employees and visitors adjacent to the Guardian building. The parking lot has a Lean To for company vehicle storage as well as direct access to the multipurpose workspace and loading dock via the garage door. Furthermore, the multipurpose outdoor workspace has sufficient room for any and all work related tasks/communal activities. It has a sheltered pavilion as well as picnic tables/sitting areas.	The client expressed the need for a multipurpose outdoor workspace. Due to the nature of their work, it is integral that they have access to an outdoor space in order to complete certain tasks. The loading dock provides access to the indoor workspace which allows the Guardians to transfer the contents of their trucks into the lab with ease. Next to the loading dock is a Lean To where the Guardians can store their vehicles when they are not in use. The pavilion is a sheltered area where employees and the community can conduct outdoor activities.

In conclusion, the three subsystems described above will be further modified and improved throughout the remaining project deliverables including our task plan and cost estimates, as well as prototyping.

**Wrike Snapshot**

Found below is the link to our Wrike snapshot, outlining the subtasks designated for the next two weeks (Deliverable E & F).

<https://www.wrike.com/frontend/ganttchart/index.html?snapshotId=UuacASlxqNa3P8yLYx695sysOCmaweln%7CIE2DSNZVHA2DELSTGIYA>