

The image features a low-angle architectural rendering of a building. On the left, a brick wall with a mix of brown and tan tones is visible. To its right, a section of a corrugated metal roof with a light greenish-grey finish is shown. The background consists of soft, overlapping geometric shapes in shades of light brown and beige, creating a modern, minimalist aesthetic. The overall lighting is bright and even, highlighting the textures of the brick and metal.

Environmental Monitoring Building

Group 17 - Green
Earth and Soul

Mish Bogomolov
Aya Ali
Assyl Irgebay
Yvonne Polinski

AGENDA

THE PROBLEM

The problem statement
and initial design sketch

01

PROTOTYPE I

A first look and testing of
critical errors

02

PROTOTYPE II

Continued testing and
errors

03

PROTOTYPE III

Final testings and final
design

04

THE PROBLEM



STATEMENT

A need exists for an environment analysing building for indigenous peoples to conduct research and surveys of their sacred land using an accessible, sustainable and culturally reflective building.

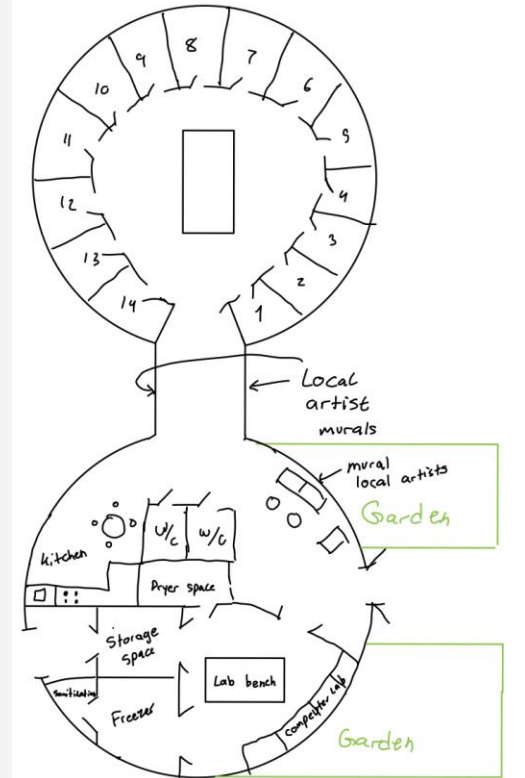


INITIAL

First, creating an overall global design while keeping in mind things discussed in client meeting, and the design criteria outlined in the deliverables

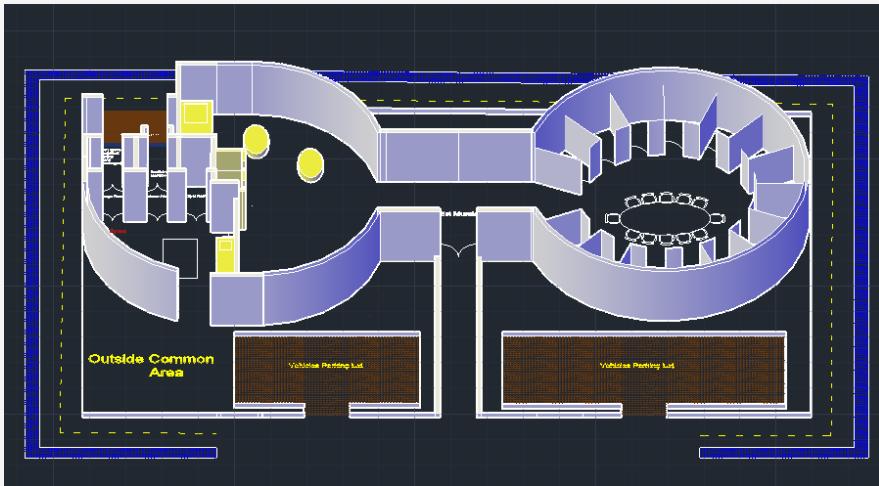


SKETCH



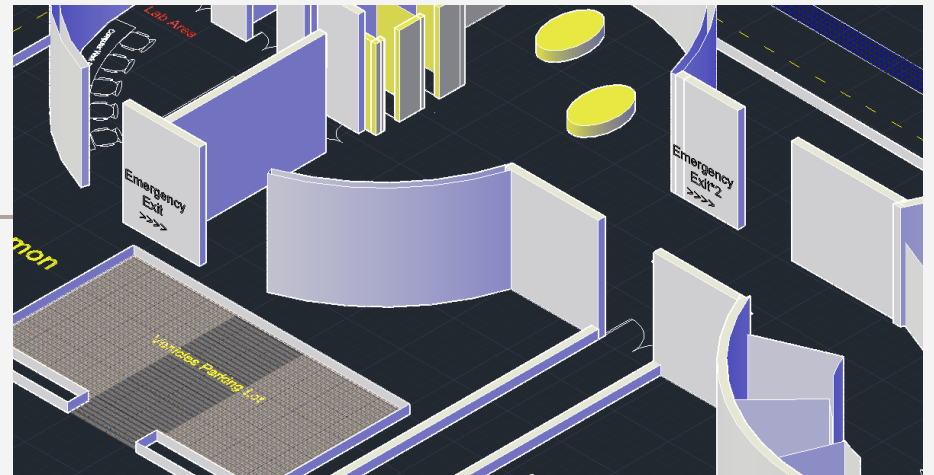
PROTOTYPE I

PROTOTYPE I

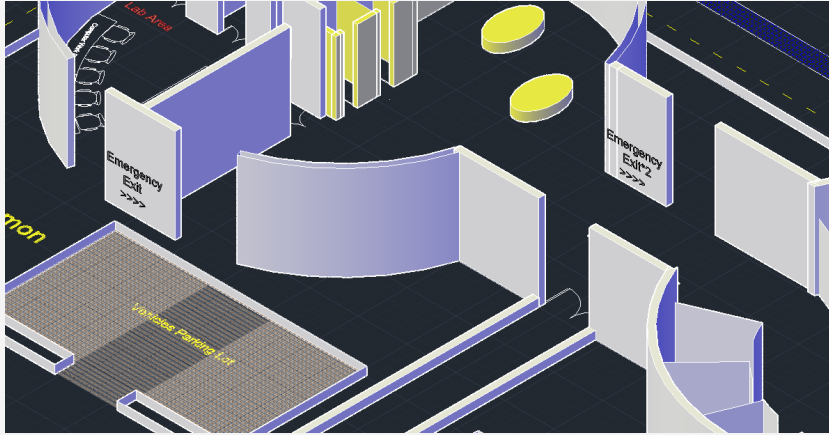


INITIALLY

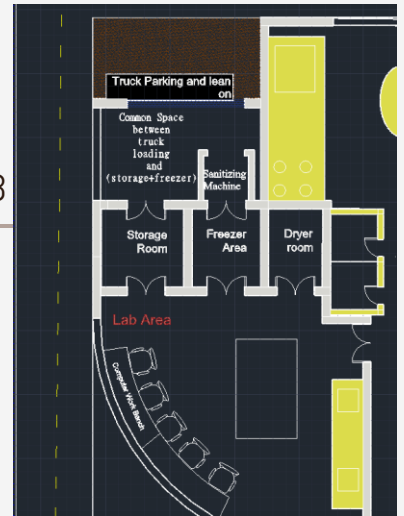
FRONT EXTERIOR



PROTOTYPE I TESTING

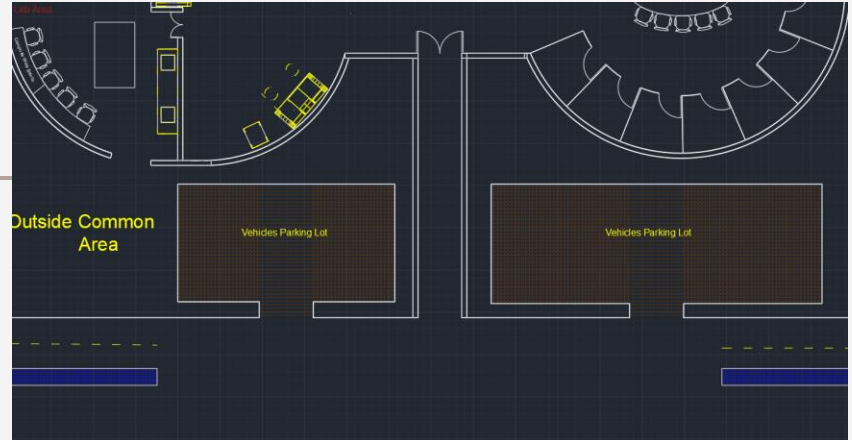


BACK EXTERIOR/LAB



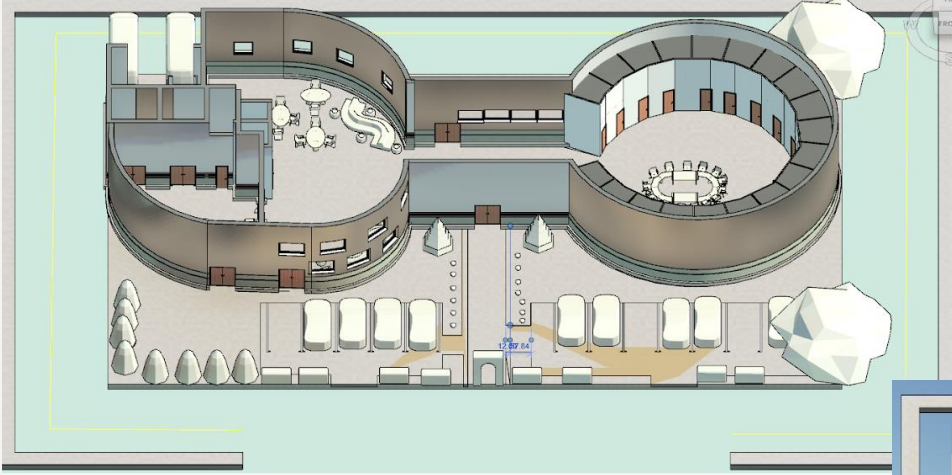
ENTRANCE AND EXITS

FRONT EXTERIOR



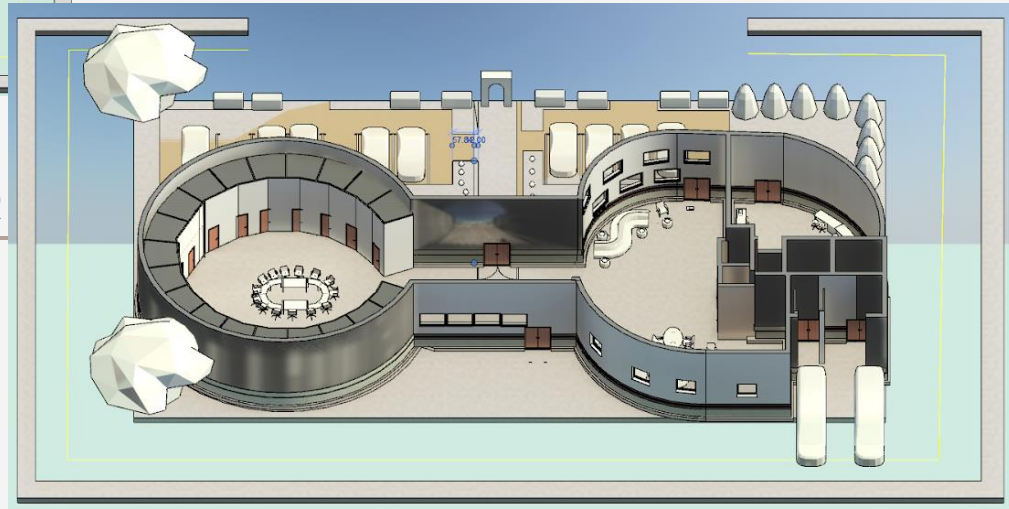
PROTOTYPE II

PROTOTYPE II

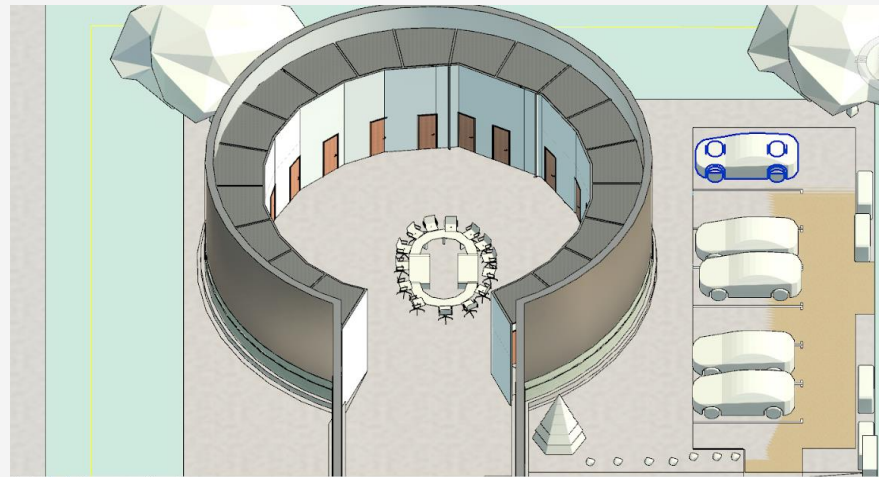


FRONT EXTERIOR

BACK EXTERIOR

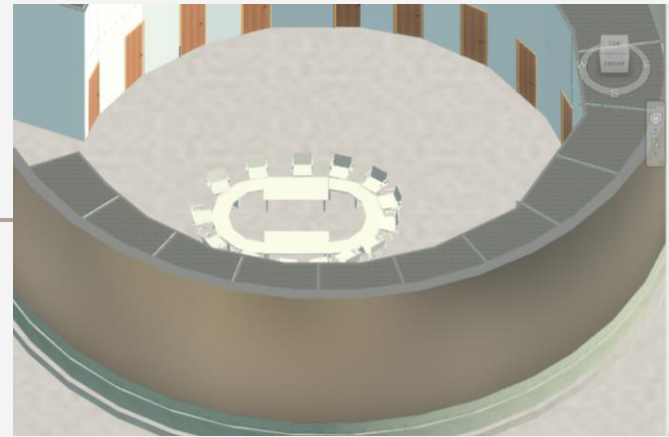


PROTOTYPE II TESTING



BOARDROOM

OFFICES

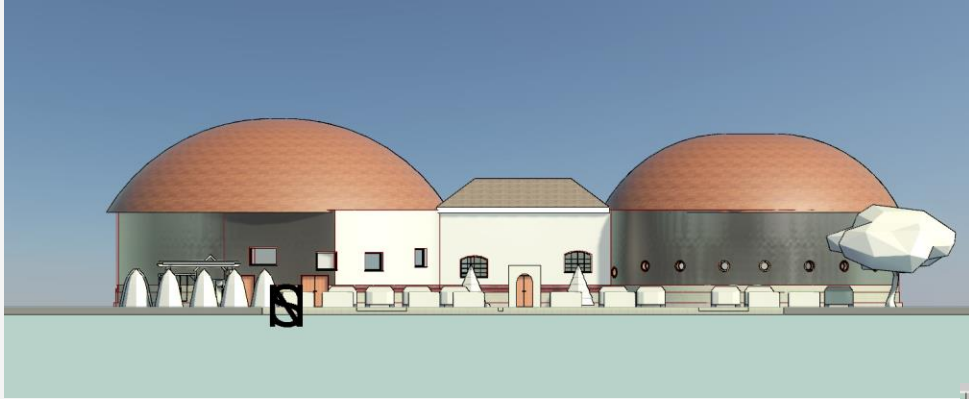


COMMON AREA



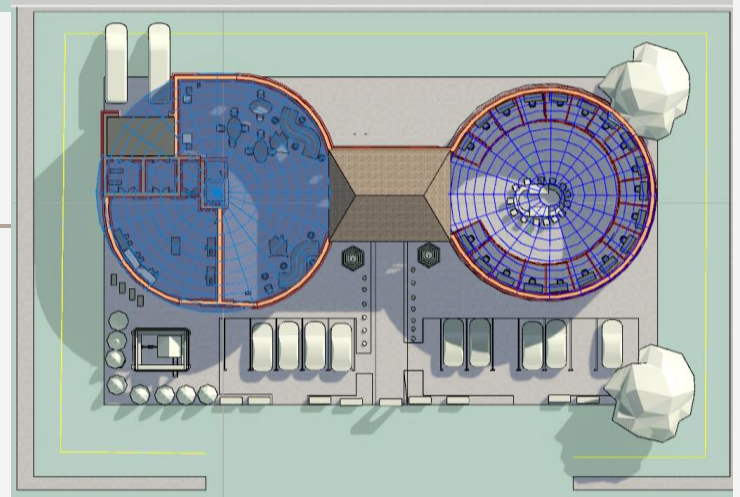
PROTOTYPE III

PROTOTYPE III



FRONT EXTERIOR

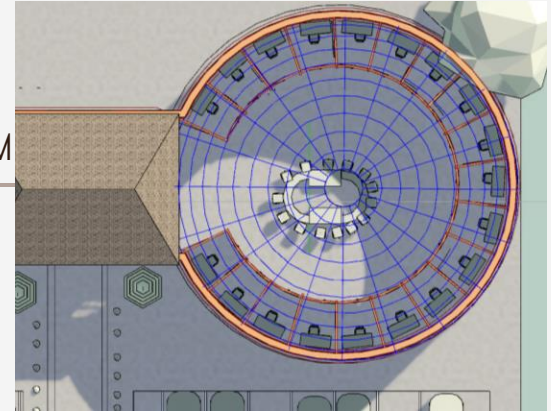
TOP VIEW



PROTOTYPE III TESTING



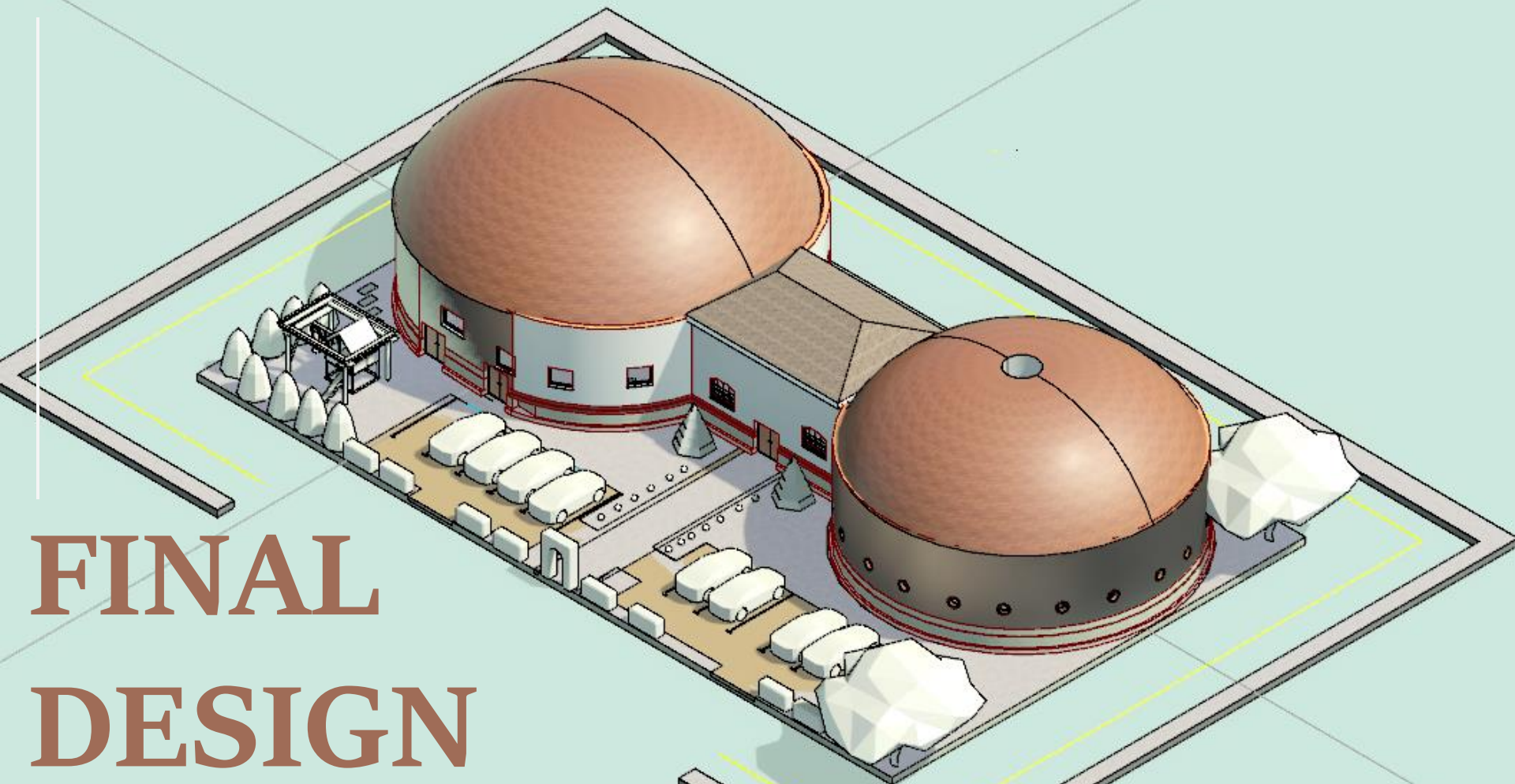
DOME ROOF



OFFICE/MEETING ROOM

HALLWAY ROOF





**FINAL
DESIGN**

THANK YOU

QUESTIONS?

